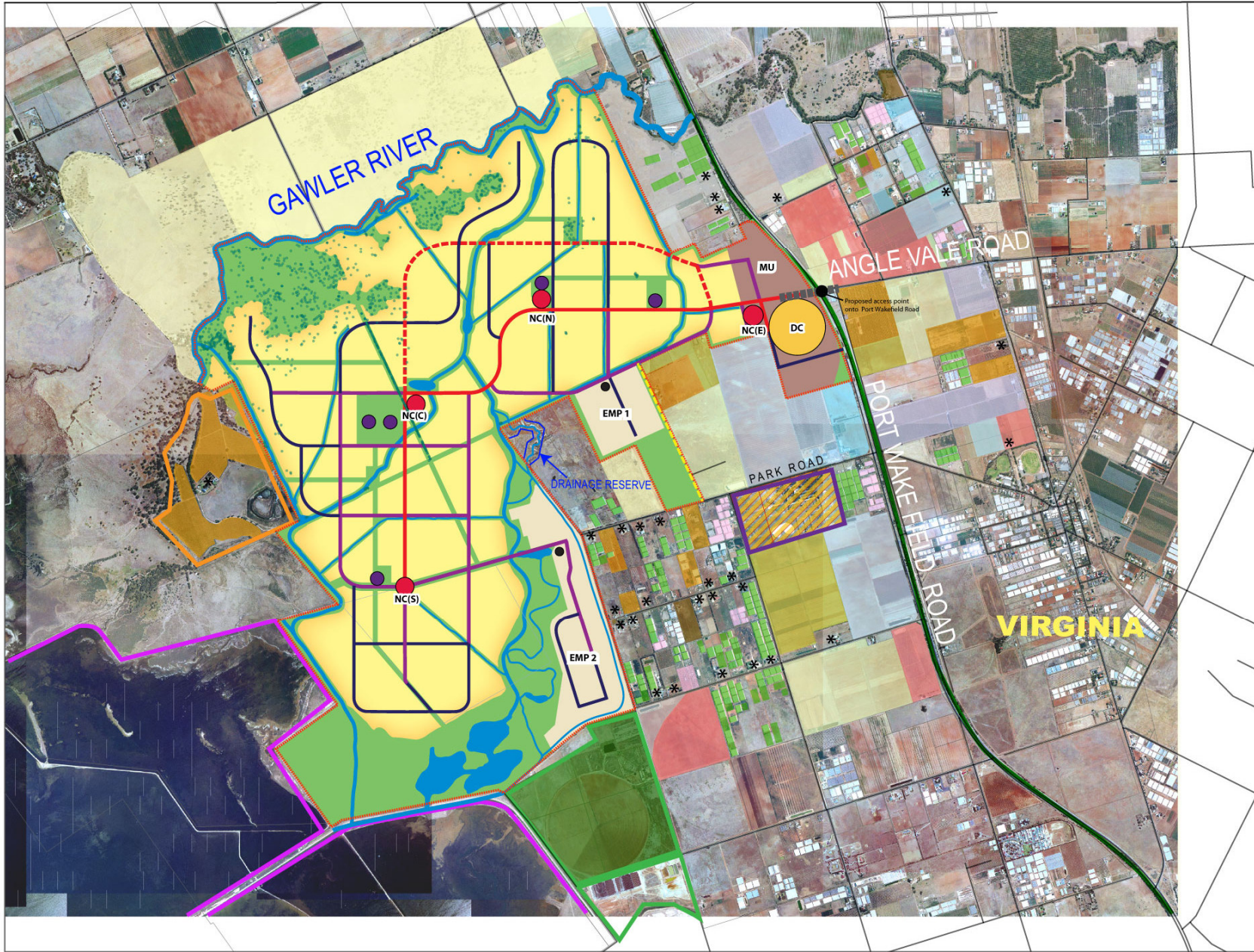


**MASTERPLAN
LEGEND**

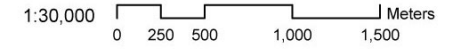
- | | | | | | |
|--------------------------------|--|----------------------|--|---------------------------|--|
| Arterial Road (divided, 2+2) | | District Centre | | Residential - Traditional | |
| Sub-Arterial (2 lanes) | | Neighbourhood Centre | | Mixed Use | |
| Distributor | | Local Centre | | Employment | |
| Collector | | School | | Open Space | |
| Emergency Vehicle Access Route | | Existing Trees | | Floodways | |
| Subject Area | | | | | |

- Land Use**
- Animal Keeping
 - Appears to be prepared for inground veg growing
 - Appears to have been recently cropped
 - Dry Crop Growing
 - Grazing Land
 - Greenhouse - in production or appear ready
 - Greenhouse - not in use
 - In-ground vegetable growing
 - Irrigated Crop Growing
 - Jeffries Demonstration farm
 - Jeffries Facility
 - Olives & Orchard
 - Propagation
 - State Shoot Park
 - Vineyard
 - Dwellings
 - Chethams Salt Pans
 - Windmere



BUCKLAND PARK EIS

FIGURE 14.13



Buckland Park Land Use Plan

Compiled: 14 May 2008

Projection: Transverse Mercator
Datum: Geocentric Datum of Australia 1994

Connor Holmes Pty Ltd
ABN 60 087 004 117

25 Vardon Avenue
Adelaide SA 5000

Contact: Matthew Pistor
T: (08) 8232 9088
F: (08) 8232 9099
E: chc@connorholmes.com.au
www.connorholmes.com.au

