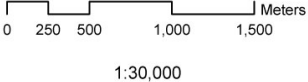
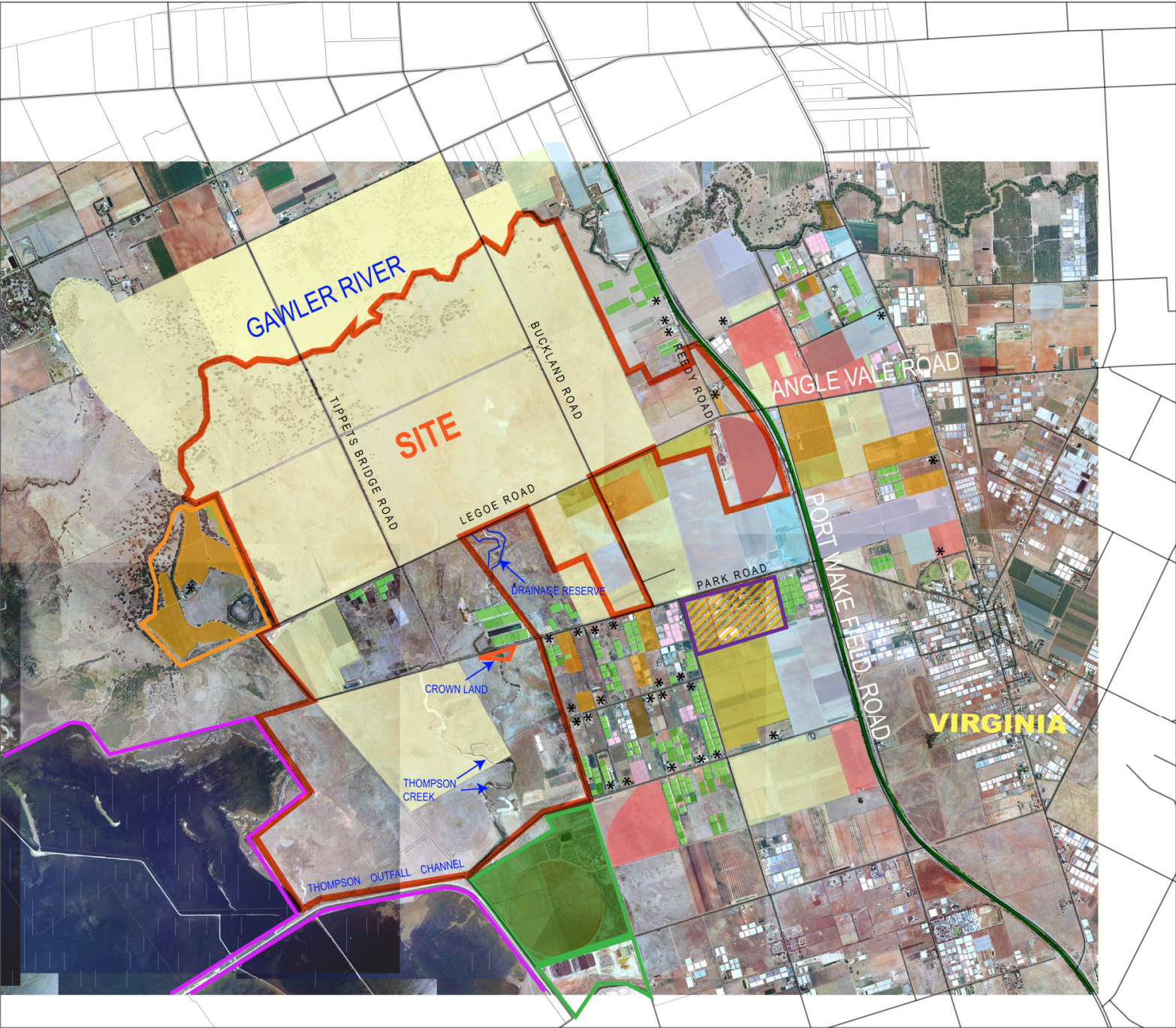


# BUCKLAND PARK EIS



- Land Use**
- Animal Keeping
  - Appears to be prepared for inground veg growing
  - Appears to have been recently cropped
  - Dry Crop Growing
  - Grazing Land
  - Greenhouse - in production or appear ready
  - Greenhouse - not in use
  - In-ground vegetable growing
  - Irrigated Crop Growing
  - Jeffries Demonstration farm
  - Jeffries Facility
  - Olives & Orchard
  - Propogation
  - State Shoot Park
  - Vineyard
  - Dwellings \*
  - Chethams Salt Pans
  - Windamere

**FIGURE 4.1**  
**Buckland Park Land Use Plan**

Compiled: 14 May 2008

Projection: Transverse Mercator  
Datum: Geocentric Datum of Australia 1994

Connor Holmes Pty Ltd  
ABN 60 087 004 117  
  
25 Vardon Avenue  
Adelaide SA 5000  
  
Contact: Matthew Pistor  
T: (08) 8232 9088  
F: (08) 8232 9099  
E: chc@connorholmes.com.au  
www.connorholmes.com.au

